

## SC2 DIAMETER RANGE

From Ø 62mm to Ø 600mm

## TECHNICAL DATA SHEET

Dimensions Overview

### DIMENSIONS

LENGTH: 680MM

WIDTH: 240MM

HEIGHT: 380MM

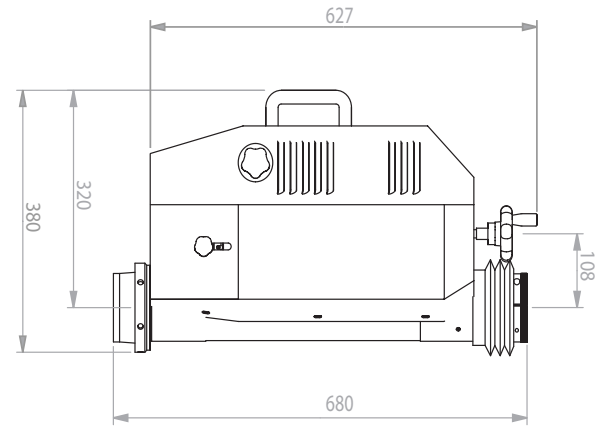
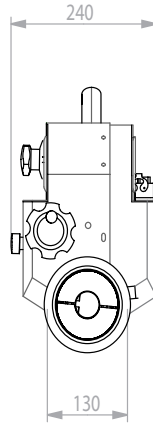
WEIGHT: 42 KG

SHIPPING DIMENSIONS:

CONTAINERS

1 - 80X50X50 CM

1 - 230X20X20 CM



### DIAMETERS

IN LINE BORING:	Ø 60MM - Ø 600MM
INTERNAL WELDING:	Ø 40MM - Ø 600MM
EXTERNAL WELDING:	Ø 40MM - Ø 600MM
DRILLING:	SEE OPTIONAL ACCESSORY KITS
TAPPING:	SEE OPTIONAL ACCESSORY KITS
EXTERNAL MACHINING:	SEE OPTIONAL ACCESSORY KITS
THREADING:	SEE OPTIONAL ACCESSORY KITS
FLANGE FACING:	SEE OPTIONAL ACCESSORY KITS

### FEED MOTOR

- DC MOTOR
- POWER RATED @ 90w
- RATED SPEED @ 11RPM
- FEED RATE PER REVOLUTION 0.56 MM/REV
- CONTINUOUS FEED STROKE - 350MM
- MANUAL & AUTOMATIC FEED - RACK AND PINION GEARED SYSTEM (90% EFFICIENCY)

### DRIVE MOTOR

- SINGLE PHASE AC MOTOR
- POWER RATED @ 1800w
- RATED SPEED @ 2800RPM
- TRANSMISSION - 4/1 HELICAL TRANSMISSION GEARBOX

#### ◦ GEAR SPEEDS:

- 1° MAX 65RPM
- 2° MAX 110RPM
- 3° MAX 230RPM
- 4° MAX 360RPM

#### ◦ OUTPUT TORQUE @ BAR

1° GEAR = 1145.39NM

### ELECTRONIC CONTROL PANEL

- VOLTAGE - 220V 50/60HZ (OPTIONAL 110V)
- ELECTRICAL ABSORPTION @ 2000W
- POWER SWITCH
- EMERGENCY STOP SWITCH
- INVERTER CW/CWW FEED CONTROLLER
- INVERTER CW/CWW ROTATION CONTROLLER
- AUTOMATIC/MANUAL FEED CONTROL
- INFINITELY VARIABLE AND REVERSIBLE FEED
- FEED RPM CONTROL (10 TURN POTENTIOMETER DIALS)
- ROTATION RPM CONTROL (10 TURN POTENTIOMETER DIALS)

### STANDARD EQUIPMENT

- |   |   |  |
|---|---|--|
| <ul style="list-style-type: none"> <li>N° 1 ELECTRONIC CONTROL PANEL</li> <li>N° 1 BORING BAR Ø 60MM X 2200MM</li> <li>N° 1 BORING BAR EXTENSION Ø 60MM X 520MM</li> <li>N° 1 TELESCOPIC WELDING TORCH (2000MM)</li> <li>N° 1 BOX OF 10 CARBIDE INSERTS</li> <li>N° 1 TOOL HOLDER RIGHT Ø 12MM X 100MM</li> <li>N° 1 TOOL HOLDER LEFT Ø 12MM X 60MM</li> <li>N° 1 TOOL HOLDER (SH) Ø 12MM X 60MM</li> <li>N° 1 SPINDLE CENTRING KIT Ø 60MM X 250MM</li> <li>N° 1 SPINDLE CENTRING KIT Ø 250MM X 600MM</li> <li>N° 1 SPINDLE CENTRING KIT FOR BLIND HOLES</li> <li>N° 2 CONICAL THREAD MAIN BEARING SUPPORTS</li> <li>N° 2 ADDITIONAL SUPPORTS</li> <li>N° 1 DIAL GAUGE SUPPORT</li> </ul> | <ul style="list-style-type: none"> <li>N° 1 DIAL GAUGE 0.01 - 5MM +/-</li> <li>N° 1 TOOL HOLDER FOR BORING FROM Ø 120MM TO 250MM</li> <li>N° 1 BORING MACHINE STAND</li> <li>N° 1 LANCE FOR EXTERNAL WELDING</li> <li>N° 5 EXTENSION LANCES 35MM</li> <li>N° 3 EXTENSION LANCES 100MM</li> <li>N° 5 SHORT CONTACT TIP Ø 0.8MM</li> <li>N° 5 LONG CONTACT TIP Ø 0.8MM</li> <li>N° 4 SHORT NOZZLES</li> <li>N° 4 LONG NOZZLES</li> <li>N° 1 TELESCOPING GAUGE 600MM</li> <li>N° 1 CENTRING KIT Ø 250MM X 600MM</li> <li>N° 4 FLANGE SUPPORTS Ø 250MM X 600MM</li> </ul> | <ul style="list-style-type: none"> <li>N° 1 TOOL HOLDER EXTENSION BORING FROM Ø 250MM TO 600MM</li> <li>N° 1 COMPLETE SET OF WRENCHES</li> <li>N° 18 BRACKET FLANGE SUPPORTS</li> <li>N° 1 REDUCTION BUSHING (LOCK)</li> <li>N° 1 REDUCTION BUSHING (DRAW)</li> <li>N° 1 TOOL HOLDER ADJUSTER</li> <li>N° 18 HEXAGONAL NUTS M14</li> <li>N° 18 ALLEN BOLTS M14X50MM</li> <li>N° 18 HEXAGONAL BOLTS M14X80MM</li> <li>N° 1 MAINS CABLE (POWER)</li> <li>N° 1 MAINS CABLE (CONTROL PANEL)</li> </ul> |
|---|---|--|

## SC2 DIAMETER RANGE

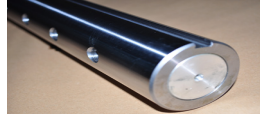
From Ø 62mm to Ø 600mm

## STANDARD EQUIPMENT

Equipment listing



**COD:** GC08SC260-1  
**ITEM:** ELECTRONIC CONTROL PANEL  
**QUANTITY:** 1



**COD:** COE00147  
**ITEM:** BORING BAR Ø 60 X 2200MM  
**QUANTITY:** 1



**COD:** COE00127  
**ITEM:** BAR EXTENSION Ø 60 X 520MM  
**QUANTITY:** 1



**COD:** KCC00113  
**ITEM:** MAINS CABLE (CONTROL PANEL)  
**QUANTITY:** 1



**COD:** GC17SC  
**ITEM:** TELESCOPIC TORCH SHAFT  
**QUANTITY:** 1



**COD:** COT90144  
**ITEM:** CARBIDE INSERTS BOX OF 10  
**QUANTITY:** 1



**COD:** COE00122  
**ITEM:** TOOL HOLDER RIGHT Ø 12 X 100MM  
**QUANTITY:** 1



**COD:** COE00121  
**ITEM:** TOOL HOLDER LEFT Ø 12 X 60MM  
**QUANTITY:** 1



**COD:** COE00610  
**ITEM:** TOOL HOLDER (SH) Ø 12 X 40MM  
**QUANTITY:** 1



**COD:** KCE00630  
**ITEM:** CENTRING KIT Ø 60MM X 250MM  
**QUANTITY:** 1



**COD:** COT90066  
**ITEM:** SHORT CONTACT TIPS Ø 0.8MM  
**QUANTITY:** 5



**COD:** COT90067  
**ITEM:** LONG CONTACT TIPS Ø 0.8MM  
**QUANTITY:** 5



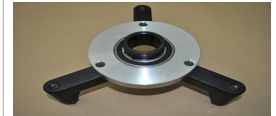
**COD:** KCS00638  
**ITEM:** COMPLETE SET OF WRENCHES  
**QUANTITY:** 1



**COD:** KCE00650  
**ITEM:** CENTRING KIT Ø 250MM X 600MM  
**QUANTITY:** 1



**COD:** GC06SC2-3  
**ITEM:** CONIC THREADED MAIN BEARINGS  
**QUANTITY:** 2



**COD:** GC13SC2-3  
**ITEM:** ADDITIONAL SUPPORTS  
**QUANTITY:** 2



**COD:** KSC00457  
**ITEM:** DIAL GAUGE SUPPORT  
**QUANTITY:** 1



**COD:** COT90145  
**ITEM:** DIAL GAUGE 0.01 - 5MM +/-  
**QUANTITY:** 1



**COD:** KED00726  
**ITEM:** TOOL EXTENSION Ø 250MM - 600MM  
**QUANTITY:** 1



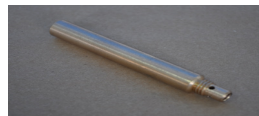
**COD:** KED00628  
**ITEM:** TOOL EXTENSION Ø 120MM - 250MM  
**QUANTITY:** 1



**COD:** COE00074  
**ITEM:** LANCE FOR EXTERNAL WELDING  
**QUANTITY:** 1



**COD:** COE00524  
**ITEM:** LANCE EXTENSIONS 35MM  
**QUANTITY:** 4



**COD:** COE00525  
**ITEM:** LANCE EXTENSIONS 100MM  
**QUANTITY:** 3



**COD:** COT90065  
**ITEM:** LONG NOZZLE  
**QUANTITY:** 4



**COD:** COT90064  
**ITEM:** SHORT NOZZLES  
**QUANTITY:** 4



**COD:** KMS00641  
**ITEM:** TELESCOPING GAUGE 600MM  
**QUANTITY:** 1



**COD:** COE00029  
**ITEM:** BORING MACHINE STAND  
**QUANTITY:** 1



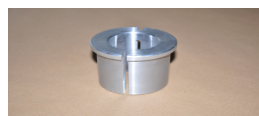
**COD:** KCE00639  
**ITEM:** SPINDLE BLIND HOLE KIT  
**QUANTITY:** 1



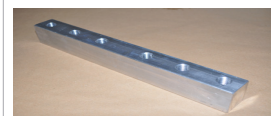
**COD:** COE00523  
**ITEM:** FLANGE SUPPORTS  
**QUANTITY:** 4



**COD:** KBT00632  
**ITEM:** REDUCTION BUSHING (DRAW)  
**QUANTITY:** 1



**COD:** COE00570  
**ITEM:** REDUCTION BUSHING (LOCK)  
**QUANTITY:** 1



**COD:** COE00520  
**ITEM:** BRACKET FLANGE SUPPORTS  
**QUANTITY:** 18

## ACCESSORY KITS

Optional Kits covering all your needs

### REDUCTION KITS - SMALL BORE DIAMETERS

PART N°.	DIAMETER RANGE	DESCRIPTION
KEP00594	Ø 22mm to Ø 50mm	Line Boring Reduction Kit for small bores
KEP00593	Ø 32mm to Ø 100mm	Line Boring Reduction Kit for small bores
KEP00678	Ø 42mm to Ø 140mm	Line Boring Reduction Kit for small bores

### EXTENSION KITS - LARGE BORE DIAMETERS

PART N°.	DIAMETER RANGE	DESCRIPTION
KED00360	Ø 400mm to Ø 600mm	Line Boring & Rotary Welding Kit for large bores
KED00366	Ø 600mm to Ø 1200mm	Line Boring & Rotary Welding Kit for large bores

### FLANGE FACING KITS

PART N°.	DIAMETER RANGE	DESCRIPTION
KES00186	Ø 48mm to Ø 255mm	Flange Facing Kit for boss faces etc.
KES00200	Ø 56mm to Ø 400mm	Flange Facing Kit for boss faces etc.
KES00363	Ø 228mm to Ø 500mm	Flange Facing Kit for boss faces etc.
KES00364	Ø 376mm to Ø 800mm	Flange Facing Kit for boss faces etc.

### EXTERNAL MACHINING

PART N°.	DIAMETER RANGE	DESCRIPTION
KEL00185	Ø 100mm to Ø 300mm	Kit for External Machining & Welding
KEP00202	Ø 150mm to Ø 400mm	Kit for External Machining & Welding

### EXTRAS

AE000643	N/A	Digital CNC Control Panel
AE000441	Ø 60mm	Boring Bar Connection Joint (a)
AE000442	Ø 60mm	Boring Bar Connection Joint (b)
AE030015	N/A	Step Welding Cam System
AE001027	Ø 60mm x Ø 1500mm	Boring Bar 60mm x 1500mm
AE030025	Ø 60mm x Ø 1100mm	Boring Bar 60mm x 1100mm with Morse Tapper No. 4
AE003014	Ø 60mm x Ø 3000mm	Boring Bar 60mm x 3000mm
KFL00927	Ø 120mm to Ø 350mm	Threading Kit

## LINE BORING & ROTARY WELDING OVERVIEW

Portable Line Boring and Rotary Welding equipment, is the ideal solution for most on-site repairs or over-hauls within the heavy plant, marine, off-shore, petrochemical, and heavy industrial sectors to name but a few. LBW Machines, have helped over many years, its commercial customers maintain a high level of maintenance repairs, helping them succeed into days demanding environments.

The affordability and investment cost, in our machines, helps our customers move from a period of losses or low profitability (old conventional repairs), into a more profitable r& repetitive repair service.

The Portability of our line boring & rotary welding machines, means they can be easily taken on-site to the plant, as opposed to transporting heavy plant or work pieces to the workshop, thus resulting in far less down-time and transport costs than would otherwise be the case.

This also reduces or avoids the need for stand-in equipment and saves on associated labour and transport costs.

Portable Line Boring and Welding Machines, allows the operator to re-machine elliptical worn bores (oversized) & then rotary weld them (undersize), and then machining them back to the original manufactures tolerances/spec or to a bespoke bush size, within hours. This process is achieved with only 1 Machine and 1 Setup.

For more information please call +44 (0) 121 537 4525, email [kieran@lineboringandwelding.com](mailto:kieran@lineboringandwelding.com) or visit [www.lineboringandwelding.com](http://www.lineboringandwelding.com)

## UNIQUE CHARACTERISTICS

### WHAT MAKES OUR EQUIPMENT UNIQUE

#### CONICAL THREADED BEARING SUPPORTS

- Stability, Alignment & Clearance

#### MOTOR FRICTION

- Permanently lubricated

#### WELDING TECHNOLOGY

- Synchronous Feed & Rotation Control (calibrated rotation speed, based on feed rate) resulting in a tight uniformed weld bead, giving even height and width.



ONE MACHINE - ONE SETUP - 10 APPLICATIONS