

SC3 DIAMETER RANGE

From Ø 62mm to Ø 800mm

TECHNICAL DATA SHEET

Dimensions Overview

DIMENSIONS

LENGTH: 680MM

WIDTH: 390MM

HEIGHT: 345MM

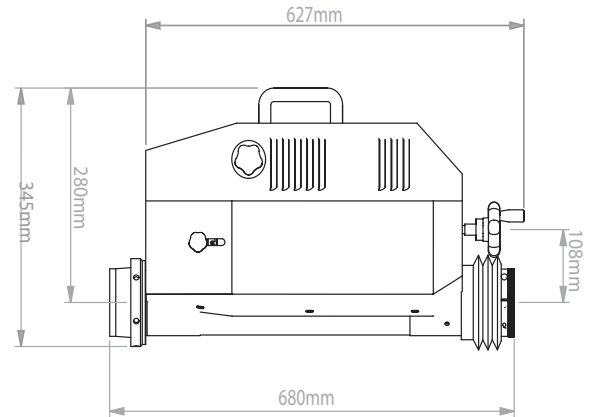
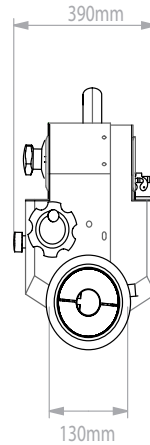
WEIGHT: 45 KG

SHIPPING DIMENSIONS:

CONTAINERS

2 - 80X50X50 CM

1 - 230X20X20 CM



DIAMETERS

IN LINE BORING:	Ø 60MM - Ø 800MM
INTERNAL WELDING:	Ø 40MM - Ø 800MM
EXTERNAL WELDING:	Ø 40MM - Ø 800MM
DRILLING:	SEE OPTIONAL ACCESSORY KITS
TAPPING:	SEE OPTIONAL ACCESSORY KITS
EXTERNAL MACHINING:	SEE OPTIONAL ACCESSORY KITS
THREADING:	SEE OPTIONAL ACCESSORY KITS
FLANGE FACING:	SEE OPTIONAL ACCESSORY KITS

FEED MOTOR

- DC MOTOR
- POWER RATED @ 90w
- RATED SPEED @ 11RPM
- FEED RATE PER REVOLUTION 0.56 MM/REV
- CONTINUOUS FEED STROKE - 350MM
- MANUAL & AUTOMATIC FEED - RACK AND PINION GEARED SYSTEM (90% EFFICIENCY)

DRIVE MOTOR

- SINGLE PHASE AC MOTOR
- POWER RATED @ 2300w
- RATED SPEED @ 2800RPM
- TRANSMISSION - 4/1 HELICAL TRANSMISSION GEARBOX

◦ GEAR SPEEDS:

- 1° MAX 55RPM
- 2° MAX 82RPM
- 3° MAX 220RPM
- 4° MAX 370RPM

◦ OUTPUT TORQUE @ BAR

1° GEAR = 1464.21NM

ELECTRONIC CONTROL PANEL

- VOLTAGE - 220V 50/60HZ (OPTIONAL 110V)
- ELECTRICAL ABSORPTION @ 2300W
- POWER SWITCH
- EMERGENCY STOP SWITCH
- INVERTER CW/CWW FEED CONTROLLER
- INVERTER CW/CWW ROTATION CONTROLLER
- AUTOMATIC/MANUAL FEED CONTROL
- INFINITELY VARIABLE AND REVERSIBLE FEED
- FEED RPM CONTROL (10 TURN POTENTIOMETER DIALS)
- ROTATION RPM CONTROL (10 TURN POTENTIOMETER DIALS)

STANDARD EQUIPMENT

- | | | |
|---|---|---|
| N° 1 ELECTRONIC CONTROL PANEL | N° 1 DIAL GAUGE 0.01 - 5MM +/- | N° 1 TOOL HOLDER EXTENSION BORING FROM Ø 250MM TO 800MM |
| N° 1 BORING BAR Ø 60MM X 2200MM | N° 1 TOOL HOLDER FOR BORING FROM Ø 120MM TO 250MM | N° 1 COMPLETE SET OF WRENCHES |
| N° 1 BORING BAR EXTENSION Ø 60MM X 520MM | N° 1 BORING MACHINE STAND | N° 18 BRACKET SUPPORTS 30X40X200MM A |
| N° 1 TELESCOPIC WELDING TORCH (2000MM) | N° 1 LANCE FOR EXTERNAL WELDING | N° 18 BRACKET SUPPORTS 30X40X270MM B |
| N° 1 BOX OF 10 CARBIDE INSERTS | N° 5 EXTENSION LANCES 35MM | N° 1 REDUCTION BUSHING (LOCK) |
| N° 1 TOOL HOLDER RIGHT Ø 12MM X 100MM | N° 5 EXTENSION LANCES 100MM | N° 1 REDUCTION BUSHING (DRAW) |
| N° 1 TOOL HOLDER LEFT Ø 12MM X 60MM | N° 5 SHORT CONTACT TIP Ø 0.8MM | N° 1 TOOL HOLDER ADJUSTER |
| N° 1 TOOL HOLDER (SH) Ø 12MM X 60MM | N° 5 LONG CONTACT TIP Ø 0.8MM | N° 18 HEXAGONAL NUTS M14 |
| N° 1 SPINDLE CENTRING KIT Ø 60MM X 250MM | N° 4 SHORT NOZZLES | N° 18 ALLEN BOLTS M14X50MM |
| N° 1 SPINDLE CENTRING KIT Ø 250MM X 800MM | N° 4 LONG NOZZLES | N° 54 ALLEN BOLTS M14X80MM |
| N° 1 SPINDLE CENTRING KIT FOR BLIND HOLES | N° 1 TELESCOPING GAUGE 800MM | N° 1 MAINS CABLE (POWER) |
| N° 2 CONICAL THREAD MAIN BEARING SUPPORTS | N° 1 CENTRING KIT Ø 250MM X 800MM | N° 1 MAINS CABLE (CONTROL PANEL) |
| N° 2 ADDITIONAL SUPPORTS | N° 4 FLANGE SUPPORTS Ø 250MM X 800MM | |
| N° 1 DIAL GAUGE SUPPORT | | |

SC3 DIAMETER RANGE

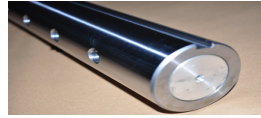
From Ø 62mm to Ø 800mm

STANDARD EQUIPMENT

Equipment listing



COD: GC08SC360-2
ITEM: ELECTRONIC CONTROL PANEL
QUANTITY: 1



COD: COE00147
ITEM: BORING BAR Ø 60 X 2200MM
QUANTITY: 1



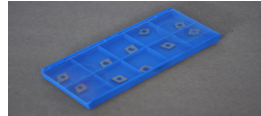
COD: COE00127
ITEM: BAR EXTENSION Ø 60 X 520MM
QUANTITY: 1



COD: KCC00976
ITEM: MAINS CABLE (CONTROL PANEL)
QUANTITY: 1



COD: GC17SC
ITEM: TELESCOPIC TORCH SHAFT
QUANTITY: 1



COD: COT90144
ITEM: CARBIDE INSERTS BOX OF 10
QUANTITY: 1



COD: COE00122
ITEM: TOOL HOLDER RIGHT Ø 12 X 100MM
QUANTITY: 1



COD: COE00121
ITEM: TOOL HOLDER LEFT Ø 12 X 60MM
QUANTITY: 1



COD: COE00610
ITEM: TOOL HOLDER (SH) Ø 12 X 60MM
QUANTITY: 1



COD: KCE00630
ITEM: CENTRING KIT Ø 60MM X 250MM
QUANTITY: 1



COD: COT90066
ITEM: SHORT CONTACT TIPS Ø 0.8MM
QUANTITY: 5



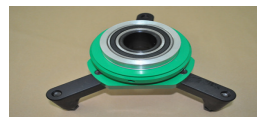
COD: COT90067
ITEM: LONG CONTACT TIPS Ø 0.8MM
QUANTITY: 5



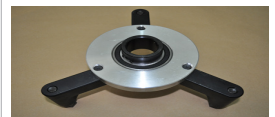
COD: KCS00638
ITEM: COMPLETE SET OF WRENCHES
QUANTITY: 1



COD: KCE00651
ITEM: CENTRING KIT Ø 250MM X 800MM
QUANTITY: 1



COD: GC06SC2-3
ITEM: CONIC THREADED MAIN BEARINGS
QUANTITY: 2



COD: GC13SC2-3
ITEM: ADDITIONAL SUPPORTS
QUANTITY: 2



COD: KSC00457
ITEM: DIAL GAUGE SUPPORT
QUANTITY: 1



COD: COT90145
ITEM: DIAL GAUGE 0.01 - 5MM +/-
QUANTITY: 1



COD: KED00727
ITEM: TOOL EXTENSION Ø 250MM - 800MM
QUANTITY: 1



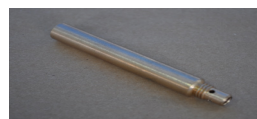
COD: KED00628
ITEM: TOOL EXTENSION Ø 120MM - 250MM
QUANTITY: 1



COD: COE00074
ITEM: LANCE FOR EXTERNAL WELDING
QUANTITY: 1



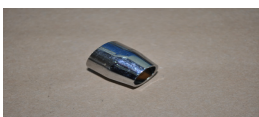
COD: COE00524
ITEM: LANCE EXTENSIONS 35MM
QUANTITY: 5



COD: COE00525
ITEM: LANCE EXTENSIONS 100MM
QUANTITY: 5



COD: COT90065
ITEM: LONG NOZZLE
QUANTITY: 4



COD: COT90064
ITEM: SHORT NOZZLES
QUANTITY: 4



COD: KMS00552
ITEM: TELESCOPING GAUGE 800MM
QUANTITY: 1



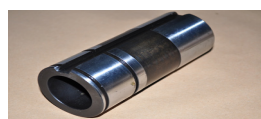
COD: COE00029
ITEM: BORING MACHINE STAND
QUANTITY: 1



COD: KCE00639
ITEM: SPINDLE BLIND HOLE KIT
QUANTITY: 1



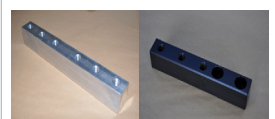
COD: COE00523
ITEM: FLANGE SUPPORTS
QUANTITY: 4



COD: KBT00632
ITEM: REDUCTION BUSHING (DRAW)
QUANTITY: 1



COD: COE00570
ITEM: REDUCTION BUSHING (LOCK)
QUANTITY: 1



COD: COE00520
ITEM: BRACKET SUPPORTS B
QUANTITY: 18
COD: COE00625
ITEM: BRACKET SUPPORTS A
QUANTITY: 18

ACCESSORY KITS

Optional Kits covering all your needs

REDUCTION KITS - SMALL BORE DIAMETERS

PART N°.	DIAMETER RANGE	DESCRIPTION
KEP00594	Ø 22mm to Ø 50mm	Line Boring Reduction Kit for small bores
KEP00593	Ø 32mm to Ø 100mm	Line Boring Reduction Kit for small bores
KEP00678	Ø 42mm to Ø 140mm	Line Boring Reduction Kit for small bores

EXTENSION KITS - LARGE BORE DIAMETERS

PART N°.	DIAMETER RANGE	DESCRIPTION
KED00365	Ø 800mm to Ø 1200mm	Line Boring & Rotary Welding Kit for large bores

FLANGE FACING KITS

PART N°.	DIAMETER RANGE	DESCRIPTION
KES00186	Ø 48mm to Ø 255mm	Flange Facing Kit for boss faces etc.
KES00200	Ø 56mm to Ø 400mm	Flange Facing Kit for boss faces etc.
KES00363	Ø 228mm to Ø 500mm	Flange Facing Kit for boss faces etc.
KES00364	Ø 376mm to Ø 800mm	Flange Facing Kit for boss faces etc.

EXTERNAL MACHINING

PART N°.	DIAMETER RANGE	DESCRIPTION
KEL00185	Ø 100mm to Ø 300mm	Kit for External Machining & Welding
KEP00202	Ø 150mm to Ø 400mm	Kit for External Machining & Welding

EXTRAS

AE000643	N/A	Digital CNC Control Panel
AE000441	Ø 60mm	Boring Bar Connection Joint (a)
AE000442	Ø 60mm	Boring Bar Connection Joint (b)
AE030015	N/A	Step Welding Cam System
AE001027	Ø 60mm x Ø 1500mm	Boring Bar 60mm x 1500mm
AE030025	Ø 60mm x Ø 1100mm	Boring Bar 60mm x 1100mm with Morse Tapper No. 4
AE003014	Ø 60mm x Ø 3000mm	Boring Bar 60mm x 3000mm
KFL00927	Ø 120mm to Ø 350mm	Threading Kit

LINE BORING & ROTARY WELDING OVERVIEW

Portable Line Boring and Rotary Welding equipment, is the ideal solution for most on-site repairs or over-hauls within the heavy plant, marine, off-shore, petrochemical, and heavy industrial sectors to name but a few. LBW Machines, have helped over many years, its commercial customers maintain a high level of maintenance repairs, helping them succeed into days demanding environments.

The affordability and investment cost, in our machines, helps our customers move from a period of losses or low profitability (old conventional repairs), into a more profitable r& repetitive repair service.

The Portability of our line boring & rotary welding machines, means they can be easily taken on-site to the plant, as opposed to transporting heavy plant or work pieces to the workshop, thus resulting in far less down-time and transport costs than would otherwise be the case.

This also reduces or avoids the need for stand-in equipment and saves on associated labour and transport costs.

Portable Line Boring and Welding Machines, allows the operator to re-machine elliptical worn bores (oversized) & then rotary weld them (undersize), and then machining them back to the original manufactures tolerances/spec or to a bespoke bush size, within hours. This process is achieved with only 1 Machine and 1 Setup.

For more information please call +44 (0) 121 537 4525, email kieran@lineboringandwelding.com or visit www.lineboringandwelding.com

UNIQUE CHARACTERISTICS

WHAT MAKES OUR EQUIPMENT UNIQUE

CONICAL THREADED BEARING SUPPORTS

- Stability, Alignment & Clearance

MOTOR FRICTION

- Permanently lubricated

WELDING TECHNOLOGY

- Synchronous Feed & Rotation Control (calibrated rotation speed, based on feed rate) resulting in a tight uniformed weld bead, giving even height and width.

